



Hope Industrial Systems, Inc.

HopeIndustrial.co.uk • HopeIndustrial.eu • **Phone:** UK: +44 (0) 20 7193 2618 / EU: +31 20 241 0853
E-mail: UK: sales@HopeIndustrial.co.uk / EU: sales@HopeIndustrial.eu

Data Sheet: Universal Mount Monitors and Touch Screens

IP65/IP66, NEMA 12/4/4X
 15"/17"/19"/19.5"/22"/23.8"

Features

- ▶ 15", 17", 19", 19.5", 22", or 23.8" active-matrix LCD
- ▶ Sealed to IP65/IP66 Standards
- ▶ Bright, high contrast, and ultra-wide viewing angles
- ▶ Touch Screen, Glass, Acrylic, and Food Protection window options
- ▶ VESA and side mounting holes standard on all models
- ▶ Cable lengths from 1.5 m to 300 m
- ▶ Small size – only 71 mm to 83 mm deep
- ▶ Black carbon steel and stainless steel enclosures
- ▶ Long-life backlights – up to 60,000 hours to half brightness
- ▶ Industrial Certifications: CE, UKCA, IEC 60721-3, UL 50E, UL/EN/IEC62368-1, UL Listed

Product Description

Hope Industrial Systems' Universal Mount Industrial Monitors are designed to provide the industrial user with excellent picture quality and rugged design for reliable continuous operation.

Universal Mount Monitors are extremely versatile and can be mounted to the floor on a pedestal, attached to a wall, column, or post, or even hung from the ceiling: anywhere in the factory a display or touch screen is needed.

These monitors are backed by industrial certifications (including 3rd-party environmental testing) and an industry-leading 5-year warranty.

Optional Accessories

- ▶ Yoke Mounts
- ▶ Multiple cable exit options
- ▶ KVM Extenders
- ▶ Benchtop mounting kits
- ▶ Free-standing pedestals
- ▶ Arm and wall mount kits
- ▶ Keyboards and keyboard trays
- ▶ Cable options up to 300 m

RoHS CE cUL US



Universal Mount Monitor on Industrial Yoke Mount with KVM Extender.



Universal Mount Monitor mounted on IP65/IP66 rated Heavy Industrial Arm Mount.



Full workstation configuration with PC enclosure, keyboard, yoke, and pedestal.



Universal Mount Monitor mounted on VESA Radial Arm.



About Hope Industrial Systems

Hope Industrial provides industrial flat panel monitors and touch screens with superior quality and up-to-date features that are relevant to industrial applications.

We house this advanced technology in a variety of rugged enclosures that allow the user to put their displays wherever they are needed in the factory. We assure our customers of high reliability over time and back it up with an industry-leading warranty.

We provide all of these benefits at a price that is significantly less than comparable industrial offerings. And finally, we offer the best sales, support and service in the industry:

- ▶ 5-year limited warranty on all monitors, return shipping included
- ▶ 24-48-hour repair turnaround (most models)
- ▶ Same day dispatch lead time (most models)
- ▶ 30-day money-back guarantee

Universal Mount Industrial Monitors and Touch Screens

Monitor Overview

Rear View

Depth only:
71.1 mm (15")
82.6 mm (17",
19", 19.5", 22",
23.8")

Optional Yoke
mount provides
full tilt/swivel



IP65/IP66 rated enclosures available in
Black Carbon Steel or Stainless Steel

VESA mounting
holes standard on
all models!

15", 17", 19", 19.5", 22",
or 23.8" Monitor with:
- Touch Screen,
- Tempered Glass, or
- Acrylic Window

Sealed rear cover
provides IP65/IP66
rated protection

Rear View with KVM Extender Option

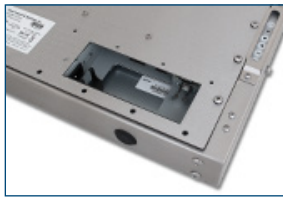
Depth with KVM
Extender only:
116.8 mm (15")
124.5 mm (17", 19",
19.5", 22", 23.8")

External rear access
to monitor controls

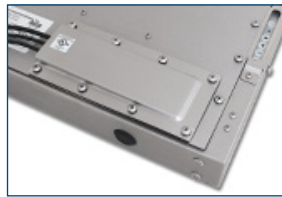
Optional modular
KVM Extender allows
placement of the display
up to 300 m away from
computer!



Cable Exit Options



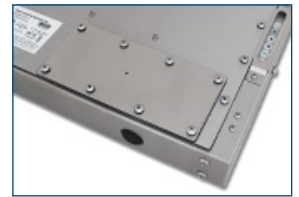
Opening to Internal
Connectors



Compression Gland
(IP22 or IP65/IP66)



Conduit Cable Exit
(IP65/IP66)



Pilot Hole Cover Plate
(IP65/IP66)

Mounting Options

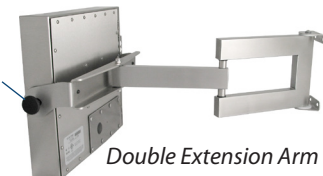
Heavy Industrial Mounts

Rugged designs ideal for even the harshest environments. Available in IP65/IP66 Rated stainless or black powder-coated steel.

Heavy Industrial Arm Mounts

Space-saving designs with full
range of motion

Adjustment
knobs lock
monitor tilt



Double Extension Arm



Single Extension Arm

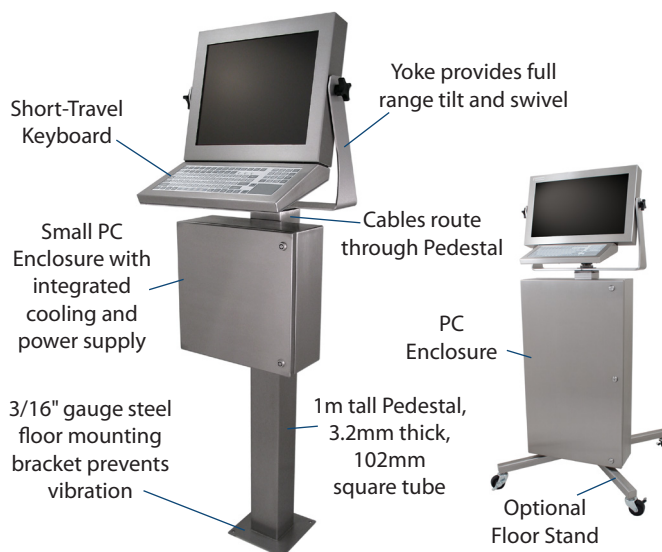
Rated at up
to 45 kg!



Wall Yoke

Heavy Industrial Yokes and Pedestals

Extremely sturdy free-standing configurations



Short-Travel
Keyboard

Small PC
Enclosure with
integrated
cooling and
power supply

3/16" gauge steel
floor mounting
bracket prevents
vibration

Yoke provides full
range tilt and swivel

Cables route
through Pedestal

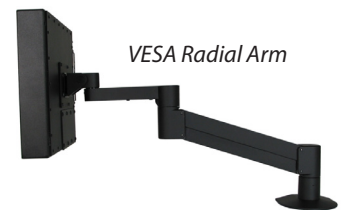
PC
Enclosure

1m tall Pedestal,
3.2mm thick,
102mm
square tube

Optional
Floor Stand

VESA Mounts

VESA holes allow for mounting on
a Wall, Bench, Post, or Column



VESA Radial Arm



VESA Wall
Mount



VESA
Benchtop
Stand

Universal Mount Industrial Monitors and Touch Screens

Model No. (Revision):	UM15 (Rev. I)	UM17 (Rev. I)	UM19 (Rev. I)	UM19.5 (Rev. C)	UM22 (Rev. D)	UM23.8 (Rev. B)
Display						
Type	Thin-film transistor (TFT) Active Matrix Liquid Crystal, LED Backlit					
Size	381 mm (15") diagonal	432 mm (17") diagonal	483 mm (19") diagonal	495 mm (19.5") diagonal	559 mm (22") diagonal	605 mm (23.8") diagonal
Image Size (W x H)	304 mm x 228 mm	338 mm x 270 mm	375 mm x 300 mm	435 mm x 239 mm	474 mm x 296 mm	527 mm x 296 mm
Native Resolution	XGA (1024 x 768 @ 60Hz)	SXGA (1280 x 1024 @ 60 Hz)		HD 1080p (1920 x 1080 @ 60Hz)	WSXGA+ (1680 x 1050 @ 60Hz)	HD 1080p (1920 x 1080 @ 60Hz)
Aspect Ratio	4:3	5:4		16:9	16:10	16:9
Pixel Pitch	0.297mm x 0.297mm	0.264mm x 0.264mm	0.293mm x 0.293mm	0.2265mm x 0.221mm	0.282mm x 0.282mm	0.2745mm x 0.2745mm
Number of Colours	16.7 million					
Brightness (white)	400 nits (cd/m ²)	250 nits (cd/m ²)		350 nits (cd/m ²)	250 nits (cd/m ²)	350 nits (cd/m ²)
Viewing Angle (Hori/Vert)	170° / 170°	178° / 178°		170° / 170°	170° / 160°	178° / 178°
Contrast Ratio	1500:1	1000:1		3000:1	1000:1	
Backlight Brightness half-life	60,000 hours	50,000 hours	40,000 hours	50,000 hours		40,000 hours
Video						
Input Connectors	DVI-I, DisplayPort					
Inputs using Adapter	HDMI, HDMI Mini, HDMI Micro, DisplayPort Mini, VGA, BNC					
Input Signal Formats	RGB Analogue, Sync Types: Separate (Sep), Composite (Comp), Sync on Green (SoG); DVI; DisplayPort					
Horizontal Scan	31-80 kHz					
Vertical Scan	50-75 Hz	49-76 Hz	50-75 Hz	50-73 Hz	48-78 Hz	50-75 Hz
Response Rate	35 ms	14 ms		20 ms	5 ms	13 ms
Electrical						
Monitor Input	100 to 240 VAC, 1.5/0.75 A, 60/50 Hz or 9.6 to 36.6 VDC, 2.5 to 0.65 A	100 to 240 VAC, 0.6/0.3 A, 60/50 Hz and 10.8 to 26.4 VDC, 2.3 to 0.9 A			100 to 240 VAC, 1.5/0.75 A, 60/50 Hz or 9.6 to 36.6 VDC, 2.5 to 0.65 A	100 to 240 VAC, 0.6/0.3 A, 60/50 Hz and 10.8 to 26.4 VDC, 2.3 to 0.9 A
Power Consumption	~13.5 W	~12 W	~13.3 W	~27 W	~13 W	~21 W
Power Management	< 1.2 W	< 2 W	< 1.5 W	< 2 W		
Environmental						
Operating Temperature*	0° to 50°C					
Storage Temperature	-20° to 60°C					
Humidity*	20% to 90% non-condensing					
Operating Shock	15 g, 6 msec, half-sine					
Vibration	Operating (sine): 1.0 g, swept sine 9-500 Hz; Transport (random): 0.1g ² /Hz, 10-200 Hz; 0.03g ² / Hz, 200-2000 Hz					
Altitude	Operating: up to 3.05 m; Non-operating: up to 12.19 m					
Functional						
Control Panel Buttons	Power On/Off button, Control Function buttons					
On-Screen Display Menus	Picture, Color, Image, OSD, Setup, Information (other options depending on model)					
Physical						
Enclosure Type	Self-contained enclosure					
Enclosure Rating	Black powder-coated carbon steel (black powder-coated aluminium rear cover): IP22 or IP65/IP66; NEMA Type 2 or 4 Stainless steel: IP22 or IP65/IP66 (depending on cable exit); NEMA Type 2 or 4X					
Enclosure Bezel (W x H)	416.6 mm x 330.2 mm	416.6 mm x 354.1 mm	467.4 mm x 397.5 mm	537.7 mm x 340.1 mm	546.1 mm x 376.9 mm	603.3 mm x 383.0 mm
Depth	71.1 mm (116.8 mm with KVM Extender)	82.6 mm (124.5 mm with KVM Extender)				
Net Weight	Carbon steel: 5.90kg Stainless steel: 7.26kg	Carbon steel: 6.80kg Stainless steel: 8.16kg	Carbon steel: 8.16kg Stainless steel: 9.53kg	Carbon steel: 8.89kg Stainless steel: 10.0kg	Carbon steel: 9.07kg Stainless steel: 11.34kg	Carbon steel: 11.7kg Stainless steel: 13.5kg
Shipping Weight	Carbon steel: 7.26kg Stainless steel: 8.6kg	Carbon steel: 8.16kg Stainless steel: 9.5kg	Carbon steel: 9.53kg Stainless steel: 10.9kg	Carbon steel: 11.34kg Stainless steel: 12.3kg	Carbon steel: 10.43 kg Stainless steel: 12.7 kg	Carbon steel: 14.5kg Stainless steel: 14.5kg
Window Options	All Models: <ul style="list-style-type: none">Single-Touch Resistive Touch ScreenTempered Glass window (non-touch)Acrylic window (non-touch) (n/a 19.5, 23.8) HIS-UM19.5 and HIS-UM23.8 Models only: <ul style="list-style-type: none">Multi-Touch PCAP Touch ScreenFood Protection window (non-touch)					
Compliances and Certifications						
Electrical	CE, UKCA, UL/EN/IEC62368-1, UL/EN/IEC60950-1, UL Listed for US and Canada, FCC Class A, CAN ICES-3A/NMB-3A, NOM					
Environmental	IEC 60721-3 (Reliability), WEEE					
Enclosure	UL 50E					

* Consult factory for the 23.8" resistive touch screen if the operating environment exceeds 70% humidity at maximum temperature spec of 50°C or exceeds 40°C at the maximum humidity spec of 90% humidity.